

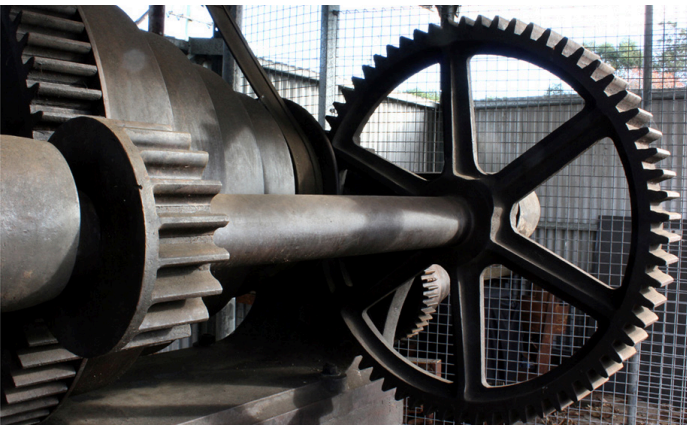
## Moruya Granite

Granite from Moruya quarries, on both sides of the river, was used in Sydney from the second half of the nineteenth century on buildings including the Sydney GPO and Customs House; the Cenotaph and other monuments, and famously, the pylons of the Sydney Harbour Bridge.

## The Abernathy Lathe

This twin bed lathe was used to create the stone columns for some of Sydney's grandest buildings. The lathe was made by J. Abernethy and Co. of Aberdeen, Scotland, in 1881. Records indicate that it was last used at Loveridge and Hudson's yard in Sydney in the 1960s.

Known to have turned Moruya granite, the lathe was relocated to the town in 2010 and is believed to be the only item of its type surviving in Australia. It is included on the NSW State Heritage Register. The stonemason's lathe is on permanent exhibition alongside the museum.



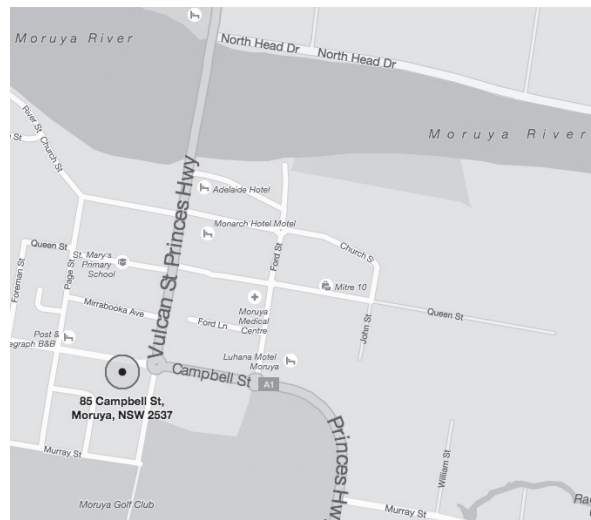
## Moruya & District Historical Society Inc.

85 Campbell Street  
Moruya

(02) 4474 3224

<https://mdhsociety.com>

<http://mdhs.org.au>



## Opening Hours

Wednesday, Friday and Saturdays  
from 10 am to 12 noon

January: Open every day except Public Holidays

## Follow Us On



Welcome to the

# MORUYA MUSEUM





# Our Museum – Emmott House

Abraham Emmott, an immigrant from Yorkshire, reached Moruya in 1859 and set up a general store on the verandah of his first home. From there he moved to his new Beehive Store on Vulcan Street where the name of “Emmotts” held good for over a century.

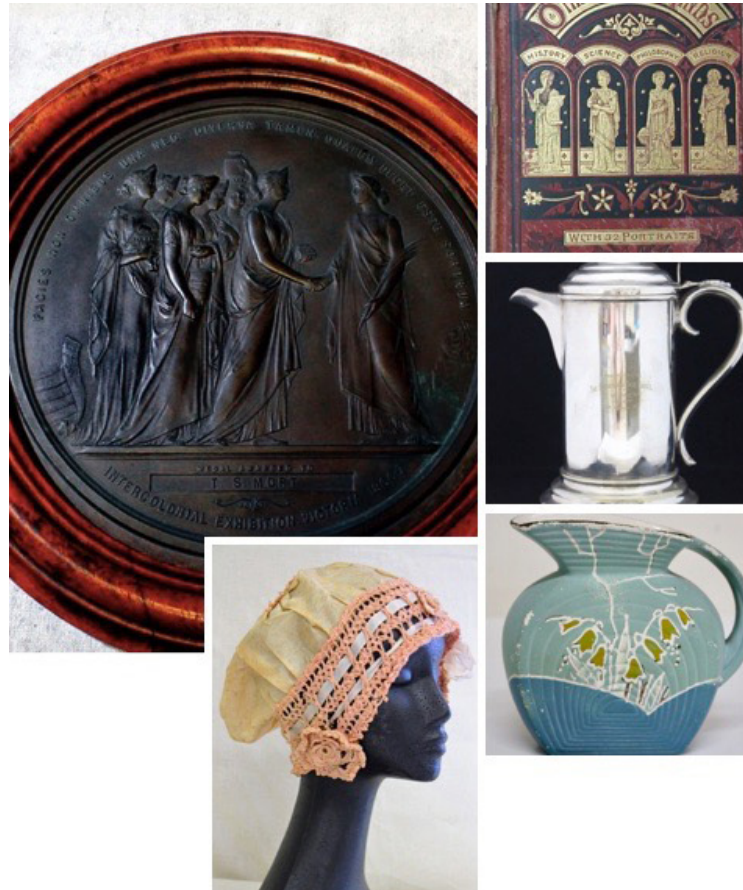
In 1875 Abraham built a pair of semi-detached houses using locally made bricks at 85/87 Campbell Street. The museum occupies one of these two houses. The formal parlour and dining room, now used for exhibitions, are downstairs as is the kitchen, with its wood-fired stove, and the laundry with its copper and mangle. A narrow entrance hall and stairs lead to the Remembrance Room and then up to a nursery and bedroom.



We invite you to step into Abraham Emmott's house and look at the rooms as they are presented today. Hopefully the rooms and the objects found in them will evoke strong memories and provide more than a glimpse into the way people lived.

# Our Collection

The Historical Society has a rich collection of artefacts ranging in date from pre-European settlement to the modern day. Most of the items in the museum were donated by local families.



Objects from top left:

1. T.S. Mort 1866 Intercolonial Exhibition Medallion
2. 1800s book
3. Coffee Pot c, 1900
4. Milk Jug
5. Night Cap

Each one of these objects has a fascinating story that we share with our visitors.



# Group Tours

Group Tours and school tours are most welcome. Tours are led by museum volunteers who have local knowledge about the items in the collection.

Call us on 4474 3224 (Wednesdays) to make a booking. Alternatively, please send an email to [secretary@mdhs.org.au](mailto:secretary@mdhs.org.au)